



New Sculptor - Chris Meder

[Click here to enquire about Rhino](#)

- Simon Morrison-Deaker & John Shewry exhibition 26th August
- Emma Butler success story
- 1st Birthday celebration for the Mountaineer Building
- Jane Kellahan exhibition 12th August at Amisfield
- Colouring Competition
- Tony Cribb exhibition on till 5th July
- \$6100 raised for Charity this month
- Quality Canvases now available in Queenstown
- Art Classes

Warm greetings from Artbay Gallery



CHRIS MEDER

SCULPTOR

Chris Meder is the most recent sculptor we have welcomed to the Gallery.

Imagination & recycled engine parts brings to life animals with personality and attitude. A quirky addition to the family, home, or garden!

Chris graduated with a degree in Fine Arts from the Otago school of Fine Arts

[Click here to enquire](#)

SIMON MORRISON-DEAKER & JOHN SHEWRY

COLLECTIONS FROM THE SHED

JOINT EXHIBITION 26TH AUGUST

One year down the track, and hot on the heels of a near to sell out show last year, Simon Morrison-Deaker & John Shewry's new works explore the cupboards, draws and shelves of our history, they run current and nostalgic ideas, themes and icons into each other. A deconstructed rusty shed from John adorns some 7 meters of wall, using corrugated panels to narrate the decades of our history to present day. Simon lets monuments and portraits sit amongst more contemporary settings to tell his tales. With both subtle and obvious use of Kiwi icons within their work, both artists have captured the essence and their affections for their home country New Zealand.

[Click here to enquire](#)



EMMA BUTLER

SUCCESS STORY



Just recently Emma has enjoyed enormous success with her latest series of paintings.

Claire Madicott, a UK card company, Hallmark cards and Image Vault, will feature Emma's artwork on Card ranges, limited edition prints, cubes & notepads

These will be available in NZ, America and Europe. This worldwide exposure will no doubt add to her success & popularity.

We will continue to stock her original paintings. Emma will be our Artist in residence this week, Thursday 12-4pm.

[Click here to enquire](#)

1st Birthday celebration for the Mountaineer Building

Please join us for a complimentary glass of Lindauer and canapés. The ground floor atrium, the Mountaineer, Rees St entrance between Kathmandu and Quicksilver

Join us until 3rd July, 4pm to 6pm daily

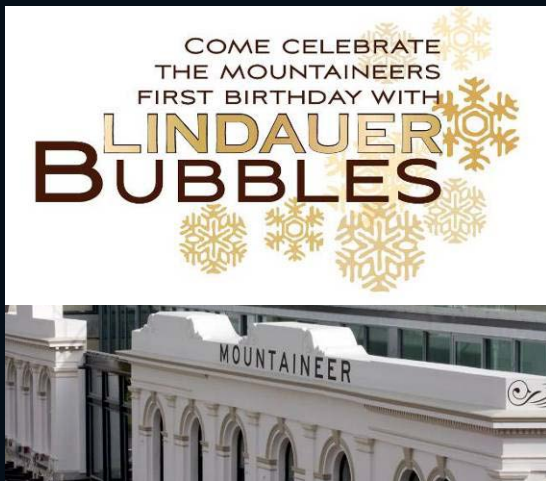
Great prizes to be won from all stores on Level 1 at Mountaineer

JANE KELLAHAN EXHIBITION 12TH AUGUST EXHIBITION 2ND AUGUST – 12TH SEPTEMBER

Known for her stunningly rich & stimulating paintings, Kiwi artist Jane Kellahan has exhibited internationally, including the Florence Biennale in Italy, the Olympic atrium in Melbourne, and the Bradman Museum in Bowral

View Jane's recent paintings at Amisfield Winery & Bistro or contact us here at Artbay Gallery www.artbay.co.nz

[Click here to enquire](#)





WINTER FUN FOR CHILDREN

COLOURING COMPETITION

AT MOUNTAINEER

Grab a copy of the Lakes Weekly Bulletin, and find the page with this image on it.

Drop in your completed artwork to us. Entries close Sunday 11th July.

TONY CRIBB

EXHIBITION ON UNTIL 5TH JULY

After completing an Arts degree from Christchurch Polytechnic, award winning artist Tony Cribb has been working from his Christchurch studio ever since. His works can be best described as quirky, with a dark sense of humour. With passion for illustration, Tony develops characters which frequently appear in his work. Finely detailed and intricate, they form a stark contrast to the overall effect of his works which, along with the often-provocative subject matter, appear raw & edgy.

[Click here to enquire](#)



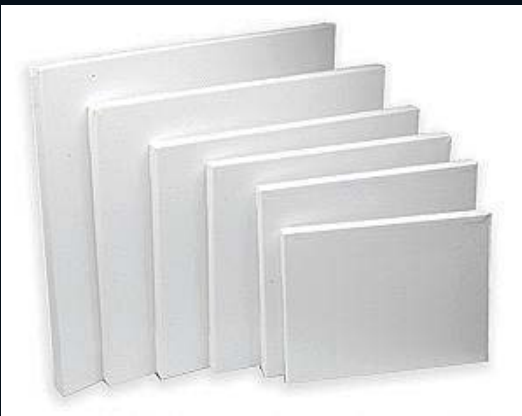


CHARITY WORK

We are thrilled to share with you that, together with our artists Dan Kelly & Rachael Errington, we raised \$6100 for our local charity, The Bruce Grant Trust, with the sale of these 2 pieces at the Thriller in the Chiller Auction.

TAUT-ART

QUALITY CANVASES NOW AVAILABLE IN QUEENSTOWN



Quality canvases from Taut-Art are now being supplied in Queenstown by Rachael Errington. Competitive prices coupled with superior standard canvases are a welcome addition to Queenstown's art scene.

Please contact rachaelerrington@gmail.com or 0211 652390 for details

New website coming soon with more info

ART CLASSES

WITH SPIKE WADEMAN



One on one Art Classes available in the Gallery, with Spike Wademan

Please phone the gallery to enquire or [Click here to enquire](#)

Art Quote by Vincent van Gogh;

"I tell you, the more I think, the more I feel that there is nothing more truly artistic than to love people."

CRAIG S. PRIMROSE QSM.

AWARDED THE QUEEN'S SERVICE
MEDAL FOR THE ARTS

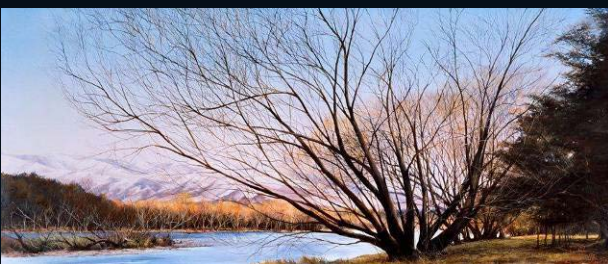
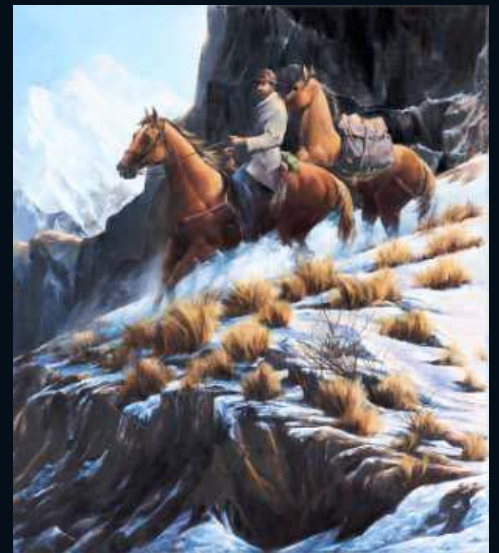
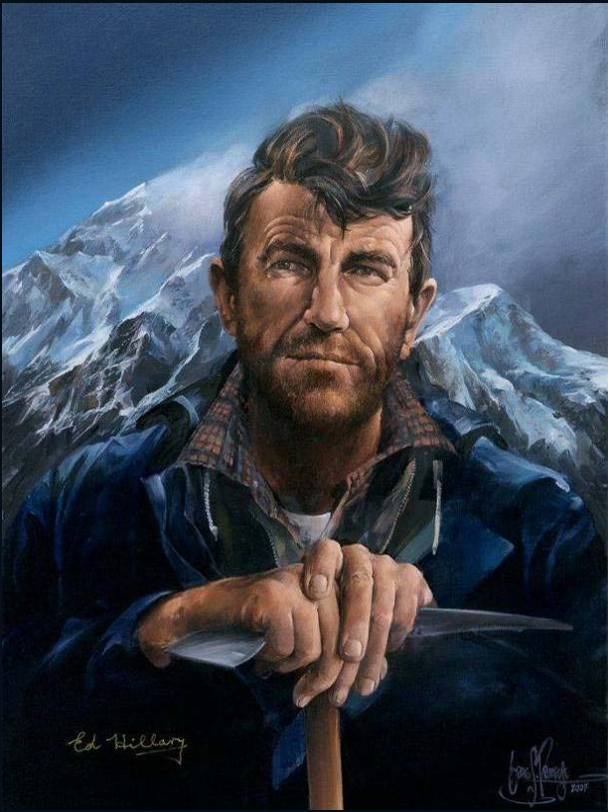


2003 - Appointed official artist for
the 50th Anniversary Celebrations
of the ascent of Everest.

From 2000, Craig was Sir Ed's preferred artist and
painted a number of works celebrating the
mountaineers' achievements.

All works are signed by Sir Edmond Hillary.

"During this time, we both became good friends, and
enjoyed discussions ranging from settings one's goals
& achieving the impossible, to what tastes better , a
fine blended whiskey, to a fledged malt."



[Click here to enquire](#) about Craig's beautiful artwork